

Ultra-compact power entry module FN 326

This family provides IEC 950-compliant power entry in a very compact form, suitable for equipment applications where space is at a premium, and provides a cost-effective option for most applications.

- up to 10A current ratings
- IEC 950-compliant
- very compact size
- PCB-mount, fast-on or wire connection options
- general-purpose application
- optional medical version (B type)



See Mechanical Data (page 40) for details of housings and output connections.

Filter selection table

Choose the family **FN xxx** with the required body style and features, and add **-??** to determine current rating, and **/??** for output connections. Example: FN 326-1/06 is a horizontal screw-mounting filter, rated for 1A, with fast-on outputs.

Approvals



Family	Current ratings A at 40°C (25°)				Output connection				Housing
	1 (1.2)	3 (3.6)	6 (7.3)	10 (10)					
FN 326 -?? /??	-1	-3	-6	-10	/01	/02	/06	/07*	✓
Inductance L mH									
	2.8	0.75	0.3	0.16					

Additional specifications

Filter type	Capacitance		Maximum leakage µA/phase	Res. R MΩ	Weight g	Maximum operating voltage		Operating frequency Hz	Hipot test voltage	
	Cx nF	Cy nF				VAC	Hz		PN→E VAC	P→N VDC
All standard types	33	2.2	190	-	40*	250	50/60	DC to 400	2000	1700
B types (medical)	33	-	2	2.2	40*	250	50/60	DC to 400	2500	1700
R types (safety)	33	2.2	190	1	40*	250	50/60	DC to 400	2000	1700

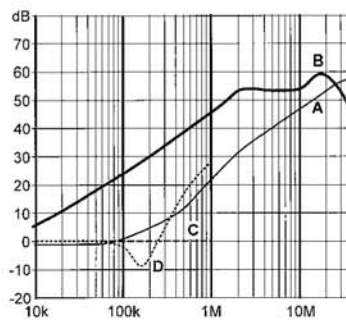
MTBF at 40°C, 230V, per Mil-HB-217F: 800,000 hours

* /07 outputs add 5g to weight

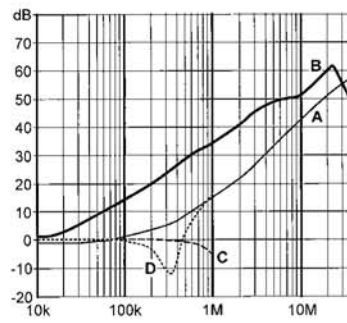
Insertion loss

Per CISPR 17: A = 50Ω/50Ω sym, B = 50Ω/50Ω asym, C = 0.1Ω/100Ω sym, D = 100Ω/0.1Ω sym

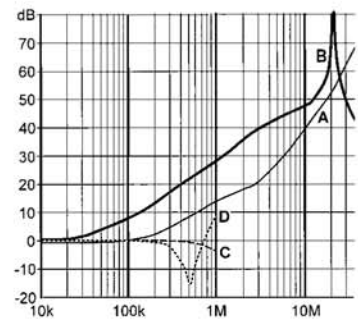
1 amp types



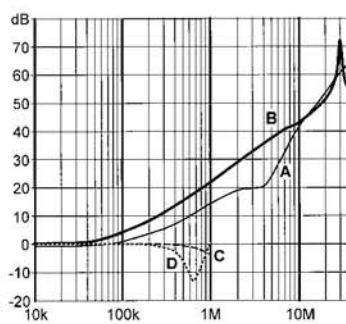
3 amp types



6 amp types

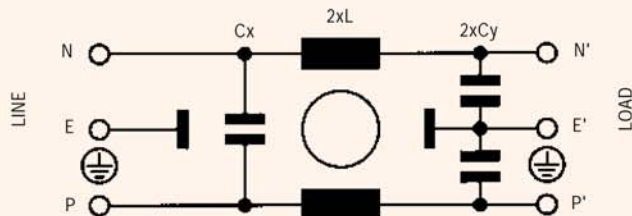


10 amp types

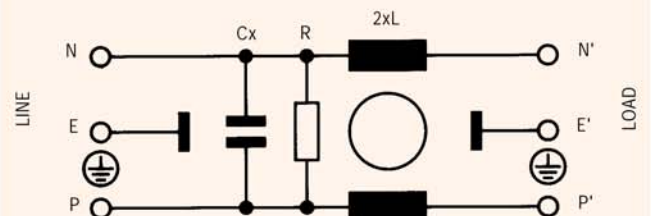


Electrical schematics

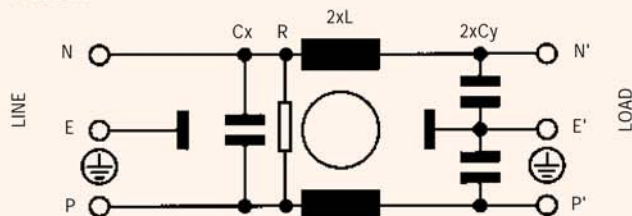
FN 326



FN 326B



FN 326R



See tables for component values