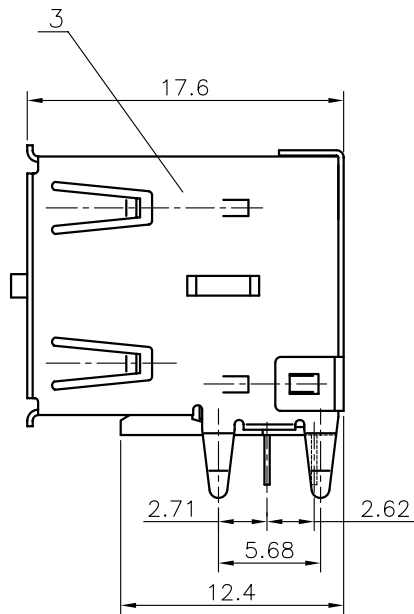
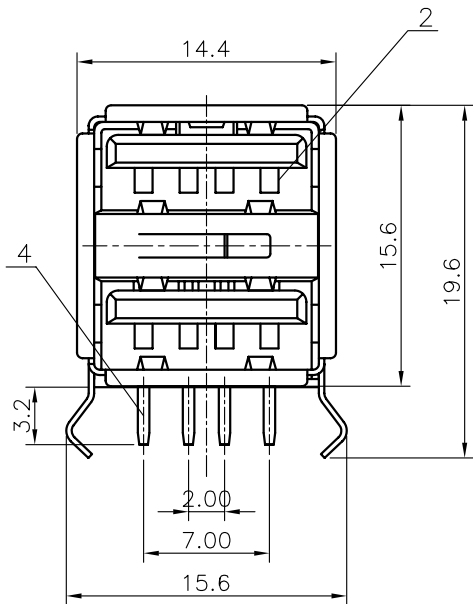


RECOMMEND PCB LAYOUT
TOLERANCE=±0.05

NOTES:

1. SPECIFICATIONS:
 - 1.0 CONTACT RESISTANCE:30mΩ max.
 - 1.1 INSULATOR RESISTANCE:1000MΩ min.AT DC 500V.
 - 1.2 CURRENT RATING:1.5A.
 - 1.3 VOLTAGE RATING:30VDC.
 - 1.4 DIELECTRIC STRENGTH:AC 500V FOR 1 Minute.
2. MATERIALS:
 - 2.0 HOUSING:PBT+30% GLASS FIBER(UL 94-0).
 - 2.1 CONTACT:COPPER ALLOY
 - 2.2 SHELL:COPPER ALLOY.



GENERAL TOLERANCE		ANGLE TOLERANCE		PROJECTION		TITLE	USB DUAL 8 PIN RECEPTALCE RIGHT ANGLE TYPE	
X. ±0.60		X. ±5°		UNITS	mm			
.X ±0.38		.X ±3°		SHEET SIZE	A4	SERIES		
.XX ±0.25		.XX ±2°						
4	CONTACT	COPPER ALLOY	SEE NOTES	DRAWING TYPE	CUSTOMER			
3	SHELL	COPPER ALLOY	SEE NOTES	SCALE	1:1	SHEET	1 OF 1	
2	HOUSING	PBT	UL 94 V-0					
1	SPRING CLIP	COPPER ALLOY	Nickel Plated					
ITEM	PART NAME	PART NO.	MATERILAS	FINISHED	DRAWING NO.			

