

**Sample Part Number**

S	F	30	-42	21	-01	1
Type	Head	Thread	Length	Material	Plating	Standard
A	B	C	D	E	F	G

A Type	Code
Screw	S

B Head	Code
Cheese(Pan) phi	C
Hexagon head bolts	H
Socket screw	S
90° flat head	F

C Thread	Code
M1.6	10
M2	20
M2.5	25
M3	30
M4	40
M5	50
M6	60
M8	65
M10	90

D L	Code
3mm	01
4mm	03
5mm	05
6mm	07
8mm	09
10mm	11
12mm	13
14mm	15
16mm	17
17.5mm	18
18mm	19
20mm	21
22mm	23
25mm	25
30mm	27
35mm	29
40mm	31
45mm	33
50mm	35
60mm	37
70mm	39
80mm	41

E Material Description	Code for Screws, Nuts, Washers
Low Carbon Steel	1
Stainless Steel (A2)	2
Brass	3
Aluminum	6

F Plating Description	Code for Screws, Nuts, Washers
Blue Zinc	2
Yellow Zinc	4
Black Zinc	7
No Plating	5
Passivated	6
Black Oxide	9
Nickel	8

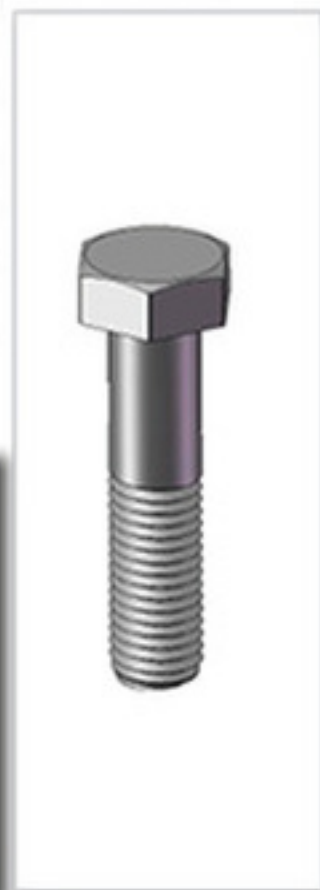
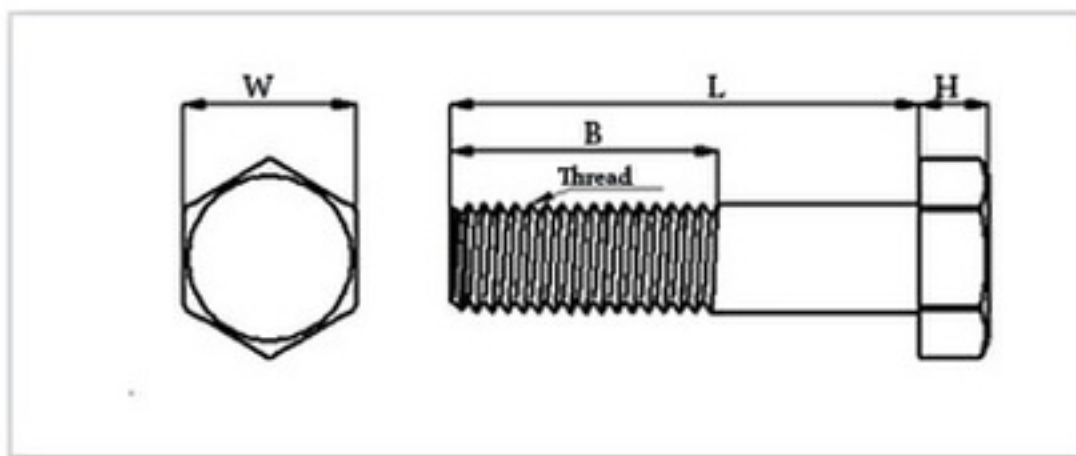
G Standard	ISO	Code
PT	-----	05
DIN 7981	ISO 7049	15
DIN 7982	ISO 7050	17
DIN 7985A	ISO 7045	02
DIN 7991	ISO 10642	18
DIN 912	ISO 4762	13
DIN 914	ISO 4027	19
DIN 916	ISO 4029	20
DIN 931	ISO 4014	21
DIN 933	SO 4017	22
DIN 965A	ISO 7046	01
WN1412	-----	24
WN1413	-----	25

For more information See page 138

## DIN 931 Hexagon head bolts partially threaded

ISO 4014

Thread	H	W	B	Code
M4	2.8	7	14	40
M5	3.5	8	16	50
M6	4	10	18	60
M8	5.3	13	22	65



## DIN 933 Hexagon head screws fully threaded

ISO 4017

Thread	H	W	Code
M3	2.0	5.5	30
M4	2.8	7.0	40
M5	3.5	8.0	50
M6	4.0	10	60
M8	5.3	13	65
M10	6.4	17	90

