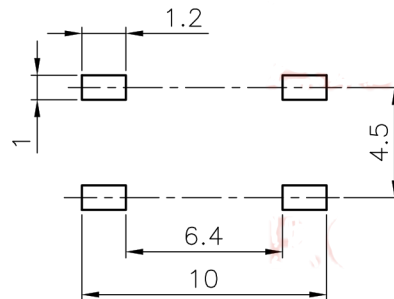
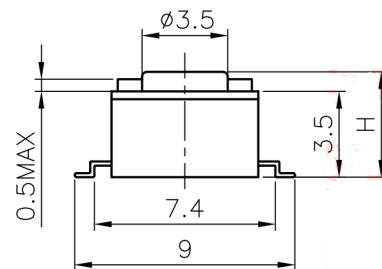
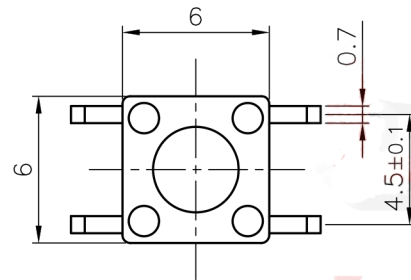


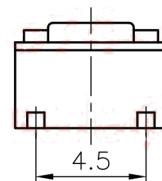
# NOTES:

## 1. SPECIFICATIONS

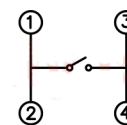
- Switch Function: Single Pole Single Throw
- Contact Rating: 50mA at 12Vdc
- Insulation Resistance:100MΩ min.
- Contact Resistance:100mΩ max.
- Operating Life:100,00 cycles
- Stop Strength: Place The Switch Such That Vertical,  
A Static Load Of 3Kgf Shall Be Applied In The Direction
- Operation Temperature Range: -25°C to +70°C
- Wave Soldering: Recommended Solder Temperature At 500°F(260°C)max. 5 Seconds,Subject To PCB 1.6mm Thickness.
- Hand Soldering: Use Soldering Iron Of 30 Watts,Controlled At 608°F(320°C)Approximately 2 Seconds.




Recommend PCB layout  
Tolerance±0.05



## CIRCUIT DIAGRAM



TC1O42-03-12 H=17mm  
TC1O42-03-13 H=7.8mm

GENERAL TOLERANCE		ANGLE TOLERANCE		PROJECTION		TITLE		TACT SWITCH SMT TYPE 6mmX6mm	
X.	±0.60	X.	±5°	UNITS	mm				
.X	±0.38	.X	±3°	SHEET SIZE	A4	SERIES			
.XX	±0.25	.XX	±2°	<div>TC1042-03-XX</div>					
DRAWING TYPE		CUSTOMER							
SCALE	1:1	SHEET	1 OF 1						
DRAWING NO.									