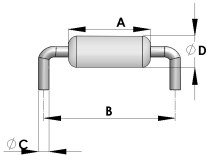


# Reed Switch - Sub-Micro - Normally Open Contacts RI-607AD Product Data Sheet

DIMENSIONS

PICTURE

A=9.6  
B=12.8  
C=0.44  
D=1.75



(1.41)

Drawings not to scale  
All dimensions in mm (inches) nominal.

SPECIFICATION		
Contact Form		Normally Open
Contact Material		Rhodium
Switching Capacity	Max.	1 VA
Switching Voltage	Max.	24 VAC/DC
Switching Current	Max.	0.1 A
Carrying Current	Max.	0.3 A
Dielectric Strength	Min.	150 VDC
Contact Resistance	Max.	100 mOhms
Insulation Resistance	Min.	10 <sup>9</sup>
Pull - In - Sensitivity		10 - 40 AT
Drop - Out - Sensitivity	Min.	5
Bounce Time	Max.	0.3 ms
Release Time	Max.	0.05 ms
Resonant Frequency	Typ.	7500 Hz
Operating Frequency	Max.	500 Hz
Vibration (10-1000Hz)		20 g
Shock (11 ms)		30
Capacitance	Typ.	0.2pF
Operating Temperature Range		-40°C + 125°C
Test Coil	Type	0211

NOTE

- When cutting or bending switch leads it is important that the glass seal is not damaged. The cutting or bending point should be no closer than 3mm (.118in.) to the glass to metal seal and the lead should be supported between the cutting or bending point and the glass to metal sea
-