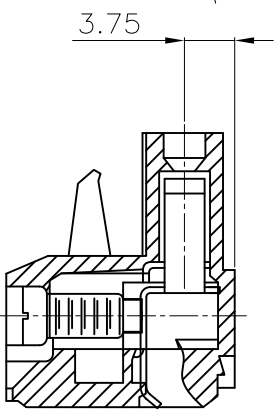
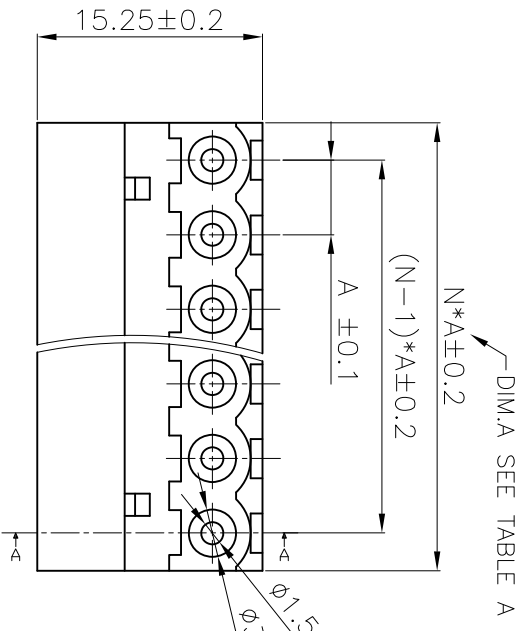


REV	DESCRIPTION	DRAWN	CHECKED	APPROVED
A	NEW RELEASE	TYF 06/03/04'		



SECTION A-A

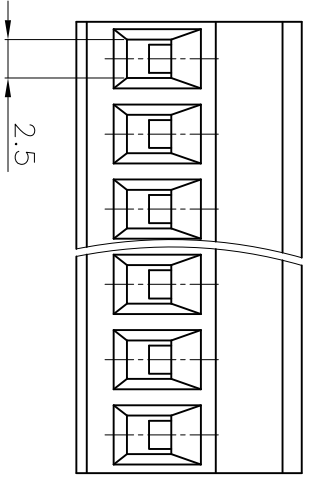
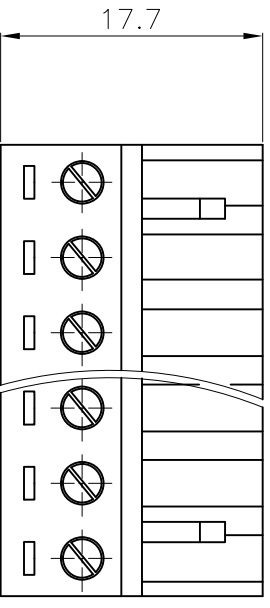


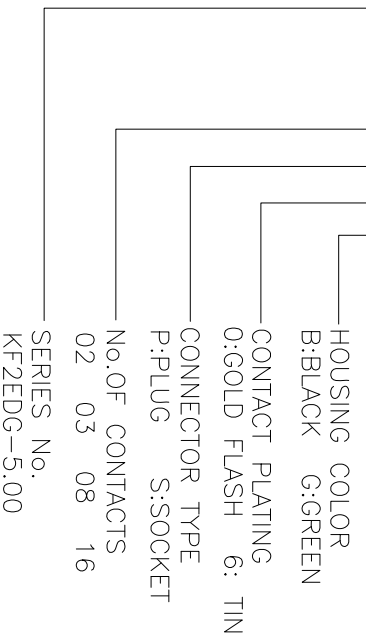
TABLE A

TYPE	Dimension
1	5.00
2	5.08
3	7.62

• MATERIAL
CONTACT : PHOSPHOR BRONZE
SCREWS : M2.5 STEEL ZINC PLATED
HOUSING : PA66, UL94V-0

• ELECTRICAL
RATED VOLTAGE : 300V
RATED CURRENT : 16A
CONTACT RESISTANCE : 20mΩ
INSULATION RESISTANCE : 5000MΩ/1000V
WITHSTANDING VOLTAGE : AC2000V/1Min
WIRE RANGE : 28-12AWG 2.5mm²

• MECHANICAL
TEMP. RANGE : -40°C ~ +105°C
MAX SOLDERING : +250°C, FOR 5 SEC.
TORQUE : 0.4Nm(3.6LB.IN)
STRIP LENGTH : 7-8mm
PRODUCT NUMBER CODE:
KF2EDG - X X X X



GENERAL TOLERANCE		ANGLE TOLERANCE		PROJECTION		TITLE	
X.	±0.60	X.	±5°	mm	mm	PLUGGABLE TERMINAL BLOCKS	
.X	±0.38	.X	±3°	A4		PITCH5.0,508,7.50,7.62MM	
.XX	±0.25	.XX	±2°			SERIES	KF2EDG SERIES
DRAWING TYPE CUSTOMER							
SCALE 1:1		SHEET 1 OF 1					
DRAWING NO. KF2EDG-XXXX							